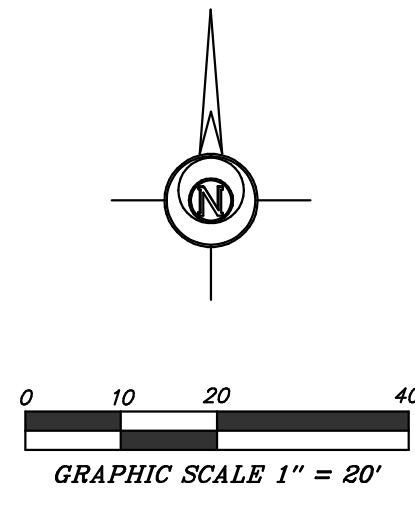
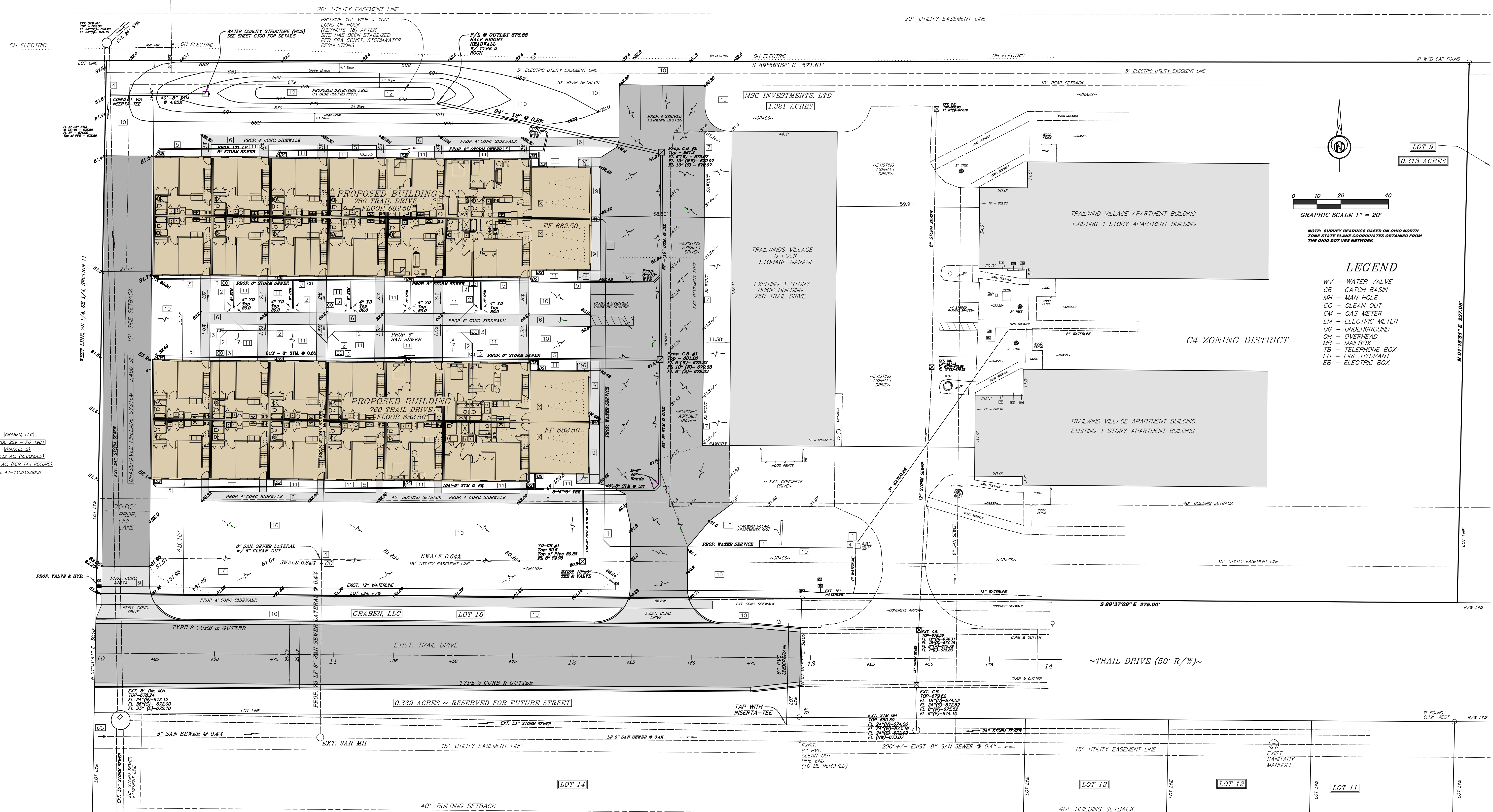


REAL-MART REAL ESTATE BUSINESS TRUST
 (RE-PLAT OF HERITAGE TOWNE CENTER LOT 7)
 LOT A - 26.420 ACRES
 (S OF 3284 & 3288)
 (N OF 41-119212-0000)



NOTE: SURVEY BEARINGS BASED ON OHIO NORTH ZONE STATE PLANE COORDINATES OBTAINED FROM THE OHIO DOT VRS NETWORK

LEGEND

- WV - WATER VALVE
- CB - CATCH BASIN
- MH - MAN HOLE
- CO - CLEAN OUT
- GM - GAS METER
- EM - ELECTRIC METER
- UG - UNDERGROUND
- OH - OVERHEAD
- MB - MAIL BOX
- TB - TELEPHONE BOX
- FH - FIRE HYDRANT
- EB - ELECTRIC BOX

GRABEN, LLC
 (PARCEL 2)
 (27.32 AC. (RECORDED))
 (18.76 AC. (PER TAX RECORD))
 (N 41-110012-0000)

NOTE: PROPOSED STORM SEWERS HAVE MINIMAL COVER. CONTRACTOR TO PROTECT STORM SEWERS DURING CONSTRUCTION FROM DAMAGE

PROJECT KEYNOTES:

- 1 PROPOSED HOPE WATER SERVICE CONNECTED TO EXIST. METER PIT - CITY TO INSPECT & OBSERVE CONNECTION
- 2 PROPOSED 6-INCH PVC SANITARY SEWER SERVICE AT 1.0% MINIMUM SLOPE
- 3 PROPOSED 6-INCH CLEAN OUT
- 4 CONTRACTOR TO FIELD VERIFY LOCATION OF EXISTING UNDERGROUND UTILITIES PRIOR TO CONSTRUCTION
- 5 PROPOSED 6" PVC SDR 35 STORM SEWER CONNECTED TO DOWNSPOUTS
- 6 PROPOSED 4" SIDEWALK (SEE PLAN FOR DIMENSIONS)(SEE DETAIL SHEET C300)
- 7 SAWCUT, REMOVE, REPAIR & BAND ASPHALT TO ALLOW FOR PROPOSED CONCRETE/ASPHALT INSTALLATION
- 8 PROPOSED 5" ASPHALT PAVEMENT (SEE DETAIL SHEET C300)
- 9 PROPOSED 6" CONCRETE PAVEMENT (SEE DETAIL SHEET C300)
- 10 AREAS OF TOPSOIL FILL AND SEEDING
- 11 AREAS OF TOPSOIL FILL (BY SITE CONTRACTOR) AND LANDSCAPING (BY OTHERS)
- 12 PROVIDE ODOT #1 & #2'S 12" THICK (SEE PLAN FOR WIDTHS)

2 WORKING DAYS BEFORE YOU DIG!

OHIO Utilities Protection SERVICE
 www.ohioups.org
 Click, Call or Tap Before You Dig
 (800) 362-2764 or 811
 NON-MEMBERS MUST BE CALLED DIRECTLY

SITEPLAN
TRAILWINDS II APARTMENTS
MSG INVESTMENTS, LTD.
760 & 780 TRAIL DRIVE
NAPOLEON, OHIO 43545

SCALE 1" = 20'
 JOB #16-220

DRAWN BY GAB 6/22/18

C101

Bockrath & Associates
 Engineering and Surveying, LLC
 115 S. Fair Avenue, Suite A - Ottawa - Ohio
 Phone: 419.523.5789

